

Customer:

Job Name:

Date:

Ship To:

Notes:

PO #:

Quote#:

Quantity:

**Standard Features**

- Three-piece unit
- 7/8" Threshold
- AcrylX™ applied acrylic
- Slip-resistant floor
- Barrier-free when properly installed

Interior Dimensions: 60" W x 38" D x 76" H

Exterior Dimensions: 62" W x 39" D x 77" H

Skirt Height: 7/8"

Weight: 320 lbs

Wall Finish: Smooth

Drain Location: Center

Material: AcrylX™

**CONFIGURATION (handed by seat)**

Fully Configured – ADA      Seat Location:  Left-Handed Seat     Right-Handed Seat

**Includes:** One stainless steel soap dish; Symmons® pressure balance mixing valve with concealed check stops; Moen® hand held shower head with hose and stainless steel slide bar/grab bar; a collapsible water dam; 2" drain; tension rod; one stainless steel corner bar; white Naugahyde folding wheelchair transfer seat (specify left or right hand).

**CUSTOM OPTIONS (Not Available if Fully Configured Option is selected)**

**Seat:**  Left-Handed Phenolic Seat       Right-Handed Phenolic Seat

Straight Grab Bars (All Grab Bars are Stainless Steel unless otherwise noted):

12"(left side wall) – QTY: \_\_\_\_\_      12"(right side wall) – QTY: \_\_\_\_\_      16" – QTY: \_\_\_\_\_      18" – QTY: \_\_\_\_\_

Location: \_\_\_\_\_      Location: \_\_\_\_\_      Location: \_\_\_\_\_

22" – QTY: \_\_\_\_\_      24" – QTY: \_\_\_\_\_      26" – QTY: \_\_\_\_\_

Location: \_\_\_\_\_      Location: \_\_\_\_\_      Location: \_\_\_\_\_

Fixture Wall:  Left     Right     Back

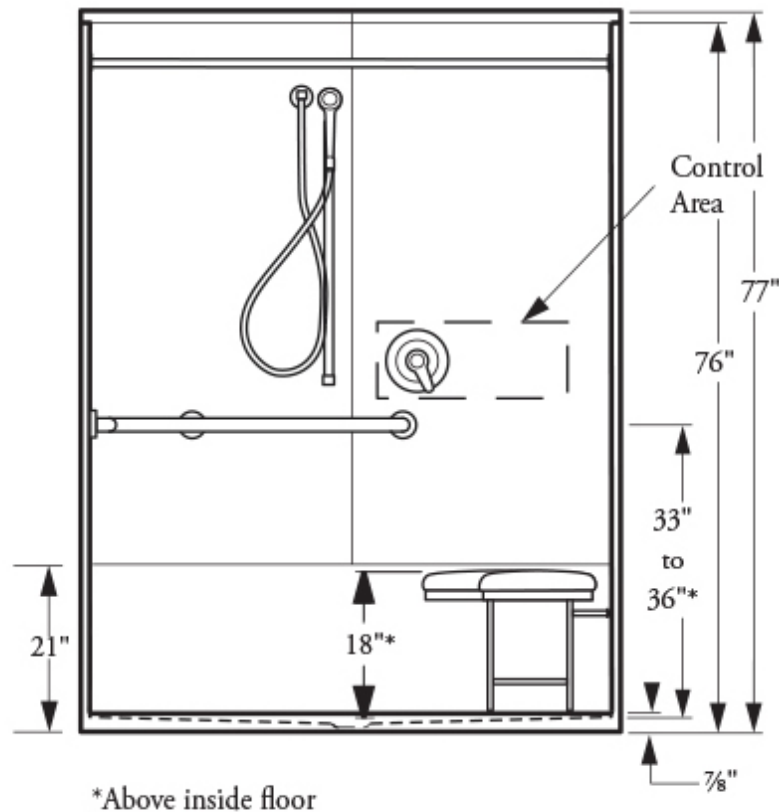
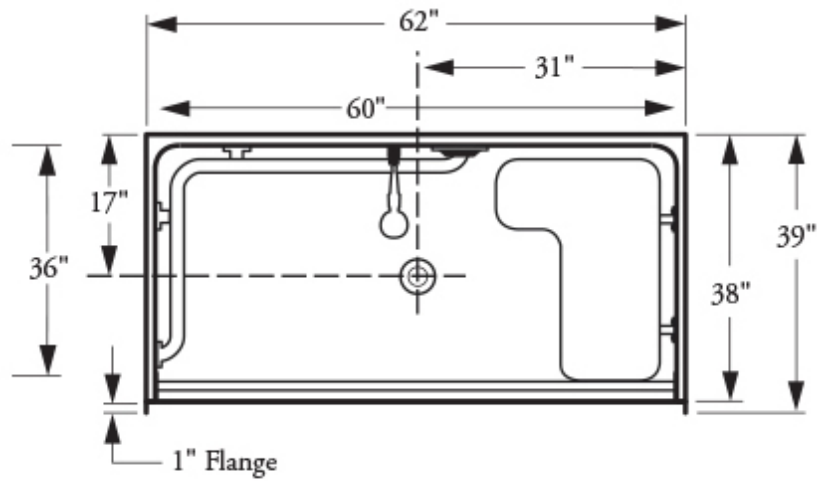
Hand-held shower assembly with 30" slide bar and 60" hose

Pressure balancing mixing valve

**OPTIONAL ACCESSORIES**

Shower Curtain     Curtain Rod     2" Drain     Collapsible Water Dam

ANY ALTERATIONS TO ACCESSORIES SHOWN BELOW, PLEASE NOTE ON THESE DRAWINGS.



\*Above inside floor

Plumbing Contractor Approval: \_\_\_\_\_ Date: \_\_\_\_\_

General Contractor Approval: \_\_\_\_\_ Date: \_\_\_\_\_

Engineer Approval: \_\_\_\_\_ Date: \_\_\_\_\_

Architect Approval: \_\_\_\_\_ Date: \_\_\_\_\_